

TELEMATICS



TOTAL INSIGHT FOR ALL
**YOUR VEHICLE MOVEMENTS,
PERFORMANCE & MAINTENANCE**

IVECO

Your partner for sustainable transport

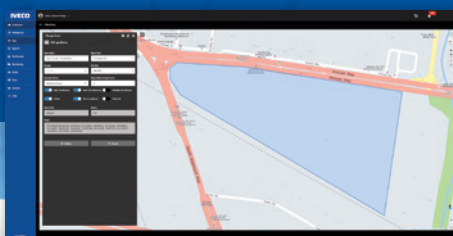
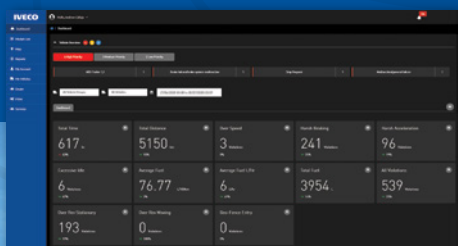
IVECO TELEMATICS

TOTAL INSIGHT

IVECO TELEMATICS PROVIDES FLEET OPERATORS WITH ACCESS TO AN EXTENSIVE ARRAY OF INFORMATION-RICH DATA, TO HELP STREAMLINE AND BRING GREATER EFFICIENCY TO THEIR VEHICLE MOVEMENTS, WHILE MINIMISING RUNNING COSTS AND UNFORESEEN DOWNTIME.

The system is now fitted as standard equipment on every Heavy Duty Euro6 ACCO, X-Way and Euro5 Stralis model in the IVECO range, effective with vehicles built from September 2020. Although primarily designed with Euro6 vehicles in mind, customers with existing applicable Heavy Duty IVECO models* will also be able to have the system retrofitted through their IVECO dealership. Some Telematics features are model-dependent (see the 'Features and Services Overview' table for full details).

IVECO Telematics features the latest technology and includes advanced functionality that is categorised as an extra in most other systems. Telemetry from the vehicle is available for users to access free for the first year of ownership, with affordable ongoing data subscription available.



HOW IT WORKS

IVECO Telematics is specifically developed for IVECO Australia and New Zealand to suit local conditions and applications, and features Australian-made hardware, software and firmware. All telematics data is housed on servers based in Australia, for added security and accessibility.

Each vehicle is fitted with a small telematics module and GPS antenna on the production line. The telematics module features secure, standardised and data-rich FMS (Fleet Management System) integration that connects to the vehicle through the CANBUS interface and ignition.

Using a secure web portal and mobile app, IVECO Telematics transmits real-time information and reporting covering vehicle performance, driving characteristics, route planning and more, assisting to reduce fleet running costs while increasing safety.

The equipment is compact and integrated into the vehicle behind the cabin in an overhead storage box, where it transmits a secure signal via the high-speed, future-proof Telstra M2M (machine to machine) 4G network. From here, the data can be accessed 24 hours a day, 7 days a week.



COMPLETE CONTROL

IVECO Telematics is one of the most advanced and complete 'end-to-end' telematics systems available in Australia and New Zealand, offering users an extensive range of tracking, driver monitoring, safety, theft, maintenance and vehicle performance data. The information is available via detailed customisable reports (scheduled and on-demand) and via easy-to-read dashboards that provide efficient and timely updates.

TRACKING AND ROUTING

Know exactly where the trucks are during the course of their route; update clients on delivery of goods or service timings as required with:

- Live GPS tracking
 - Geo-fencing of operating areas and/or restricted areas
 - Vehicle trip information reports including trip details and log reports
-

THEFT AVOIDANCE

Reduce downtime and disruption by mitigating the risk of vehicle theft 24 hours a day, 7 days a week.

- Vehicle is tracked at all times
 - Provides alerts when the vehicle leaves a designated area or geo-fence
 - Advises if the vehicle moves without the ignition being actuated
-

SAFETY

The perfect complement to IVECO's extensive list of on-board active and passive safety equipment, the telematics program can also deliver:

- Vehicle roll over alert
 - Impact alert
-

VEHICLE MAINTENANCE

To assist in minimising vehicle downtime and to better schedule maintenance work, IVECO Telematics provides data including the below, which is accessible via customisable reports:

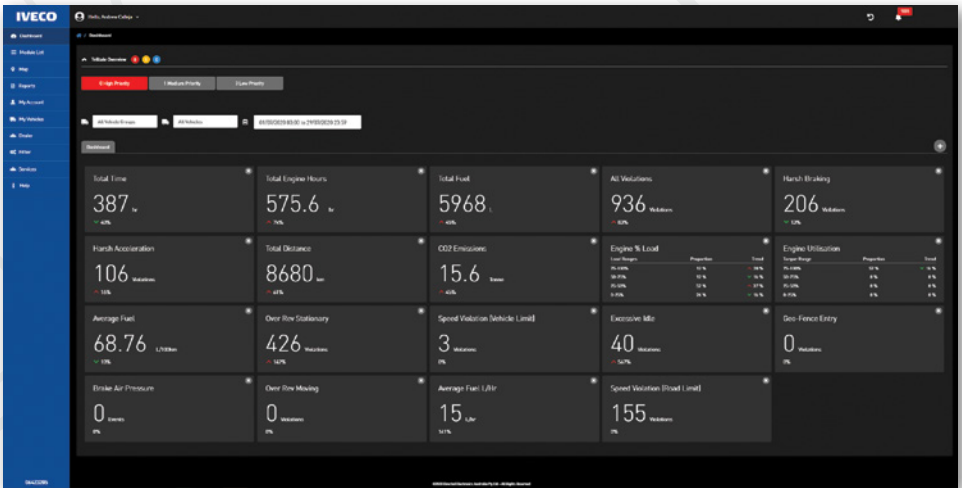
- Vehicle odometer and engine hours readings
- Scheduled maintenance reporting
- 'Tell-tale' activity reporting
- Battery voltage level
- Engine coolant, engine oil and transmission fluid alerts

COMPLETE CONTROL

VEHICLE PERFORMANCE

Gain a better understanding of how the truck is being used in its application by receiving up to 70 data channels and tell-tale messages via IVECO FMS in customisable reports covering:

- Speed
- Brake count
- Gear changes
- Fuel usage
- Ambient and cooling temperatures
- GCM status
- Engine RPM (low, green and high)
- Cruise control usage



Dashboard

COMPLETE CONTROL

DRIVER MONITORING

Driving performance plays a major role in the fuel consumption and maintenance costs of a vehicle. IVECO Telematics will identify driving style issues and allow these to be improved through additional training. The system can provide:

- Harsh braking alert
- Harsh acceleration alert
- Moving and stationary over-revving alert
- Over-speed alert and over-speed limit alert
- Over-idling alert
- Driver scorecard reports
- Driver productivity reporting

FEATURES & SERVICES OVERVIEW

	Euro5	Euro6	
	Stralis	ACCO	X-Way
Tracking & Routing	x	x	x
Theft Avoidance	x	x	x
Safety	(x)	x	x
• Vehicle roll-over alert	x	x	x
• Impact alert	x	x	x
• Low service brake air pressure alert	–	x	x
Vehicle Maintenance	(x)	x	x
• Vehicle odometer and engine hours readings	x	x	x
• Scheduled maintenance reporting	x	x	x
• Tell-tale activity report	–	x	x
• Battery voltage level	x	x	x
• Engine coolant, engine oil and transmission fluid alerts	–	x	x
Vehicle Performance	(x)	(x)	x
• Speed	x	x	x
• Brake count	x	x	x
• Gear changes	x	–	x
• Fuel usage	x	x	x
• Cooling temperatures	x	x	x
• GCM status	–	–	x
• Engine RPM (low, green and high)	x	x	x
• Cruise control usage	x	x	x
Driver Monitoring	x	x	x
Portal & Mobile App	x	x	x
Warranty & Support	x	x	x

EASY-TO-USE PORTAL

All data and detailed reporting from IVECO Telematics is accessed through a secure portal: ivecotelematics.com.au or ivecotelematics.co.nz, which are compatible with Microsoft Edge, Google Chrome, Mozilla Firefox and Apple Safari browsers. A profile page allows users to customise their account details and settings, manage users and access information covering:

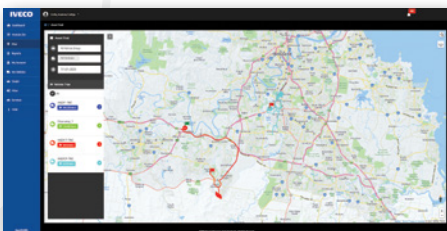
- Map page and areas
- Asset trails (provides 24 hour snapshot of all fleet movements)
- Live tracking
- Dashboard
- Management (vehicles, groups, drivers and services)
- Alerts
- Reporting – including automatically-generated in pdf, xlsx and csv formats and on-screen
- Vehicle transfer
- Help

This information is also accessible through a mobile app which is available for both Apple and Android devices by searching 'IVECO Telematics' at the app store.

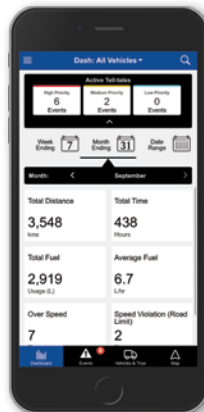
For transport companies and fleet operators using their own telemetry programs, IVECO Telematics can be integrated via the Applicable Program Interface (API), allowing easy integration into their current portal.



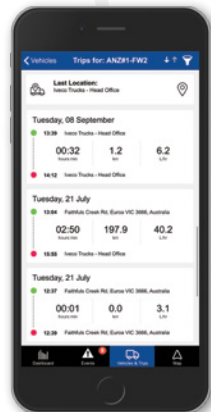
Location map



Asset Trail



App – Dashboard



App – Trips

WARRANTY & SUPPORT

IVECO Telematics is covered by a generous warranty period that matches the standard warranty duration of the vehicle to which it is fitted.

As the system is locally developed and manufactured, spare parts and support are always close by and easily accessible. Should any hardware fail, it will be replaced for a new component under a changeover program. The changeover is facilitated through your authorised IVECO Dealer and replacement parts are promptly dispatched within one to two business days from the day the changeover request is received.

Support and troubleshooting for IVECO Telematics can be accessed through the 'Telematics Troubleshooting Guide' for hardware-related faults and via the 'Telematics Portal User Manual' for portal assistance and for technical assistance. General technical support services can be accessed by contacting MYIVECO Customer Support:

Australia Customers

ivecotelematics.com.au

iveco.com.au

Ph: 1800 448 326

New Zealand Customers

ivecotelematics.co.nz

iveco.co.nz

Ph: 0800 367 483

*COMPATIBLE WITH EXISTING IVECO EURO6 VEHICLES WITH FMS STANDARD V4 VERSION 13.10.2017 AND IVECO EURO5 VEHICLES WITH FMS STANDARD V2 VERSION 11.11.2010. THERE WILL BE SOME REDUCED DATA AVAILABLE FOR EURO5 MODELS.

FURTHER INFORMATION ON IVECO TELEMATICS, INCLUDING OUR DATA HANDLING STATEMENT CAN BE FOUND AT WWW.IVECO.COM.AU/PRODUCT/TELEMATICS. THE INFORMATION IN THIS DOCUMENT WAS CORRECT AT THE TIME OF PRINTING. IMAGES IN THE DOCUMENT MAY DEPICT OVERSEAS MODELS OR SHOW EQUIPMENT NOT INCLUDED IN THE STANDARD VEHICLE AND ARE SUBJECT TO AVAILABILITY. IVECO RESERVES THE RIGHT TO AMEND ANY PART OF THIS DOCUMENT WITHOUT NOTICE. IVECO TRUCKS AUSTRALIA LIMITED A.B.N. 86 004 065 061 PRINCES HWY, DANDENONG, VICTORIA 3175 PO. BOX 117 DANDENONG, VICTORIA 3175 TELEPHONE: (03) 9238 2200 WWW.IVECO.COM.AU



iveco.com.au

IVECO

Your partner for sustainable transport